

THE TOWER

March/April 2015



EDITORIAL

As we prepare this issue of The Tower, the sun is streaming through the window and it would appear that we have escaped the worst ravages of winter again. We will soon be looking forward to seeing the river bank clothed in daffodils, a true sign that spring has arrived. The daylight hours are getting longer and the birds are starting to stake their claims on territories, evidenced by the increase in bird song as the sun comes up. Isn't it marvellous how without any committees or great debates, nature quietly gets on with things and makes sure that it is business as usual. Many of us maybe don't have time to stop and enjoy the natural beauty that unfolds all around us every day, but if you care to take a leisurely walk out along the river bank, or up Cow Drove, you just might be surprised at what you will see and hear all around you.

One thing that is very noticeable at the moment, pretty well everywhere you go, is the sudden eruption of molehills. If you are a keen gardener and take pride in your lawn, moles are your worst nightmare - they are cunning and difficult to stop. The only saving grace is that moles (as far as we can tell) do not have a nuclear arsenal with which to fight back when the 'smokes' and traps are deployed against them.

For years, people have been asking the question "Why did the chicken cross the road?". Well, never mind the chicken, why do worms sometimes come out en-mass onto pavements and roads in broad daylight after a night's heavy rainfall? The other day whilst walking up Cow Drove, there were literally hundreds of worms of all sizes out on the road, many of which died through either being run over, or through dehydration. A little bit of web browsing came up with the apparent answer:

"Worms of all kinds are highly susceptible to desiccation [drying out]. They breed when it rains. They come out of the ground to find each other and to lie side by side in a mating posture, a difficult thing to do in the confines of their burrows. (And we complain about the back of a Ford!) The only time earthworms can safely come to the surface to breed is when the ground is thoroughly soaked. Worms don't have lungs, they breathe via gas diffusion through special organs in their skin and their skin must be moist in order for this to work".

Not that you will need reminding, as the TV and radio is boring us to bits with it all at the moment, there are elections on 7 May. We would draw your attention to page 14 of this issue where you will see an important notice for our village parish council election.

Mervyn & Judy Head

**Contributions for 'THE TOWER' should be emailed to:
headsmendip@bopenworld.com, or posted at 52 High Street, South Kyme**

Items for MAY/JUNE must be received by 23 April 2015

CLUBS AND SOCIETIES

SOUTH KYME SHORT MAT BOWLS CLUB

The club meets in the village hall at 7.30-10.00 p.m. on Wednesdays and at 2.00-4.00 p.m. on Fridays. Membership is £5.00/year, with a session/match fee of £1.50. New members will be most welcome.

SOUTH KYME TABLE TENNIS CLUB

The club meets in the village hall on Tuesday evenings from 7.30 - 8.30 p.m. Membership is £5.00/year, with a session fee of £2.00. Age restriction is 16+ and any new members will be welcome. We have 3 tables and plenty of bats and balls. Tables can also be hired by non members at other times for £2.50 per hour per person. To book, please call 01526 861566 or 01526 869297

SOUTH KYME WOMEN'S INSTITUTE

South Kyme WI meets in the Village Hall, at 7.30 pm, on the second Monday of the month. Why not join us? We have some interesting talks and demonstrations lined up and there's always time for a chat when the refreshments are served.

Monday 9 March. Enjoy an Easter themed workshop, with Jackie.

Monday 13 April. Jane will be giving a talk entitled paraphernalia. This will also be our Annual meeting where we can reflect on the previous year, plan for the future and our new Officers will be elected.

The Membership fee for 2015 will £36.00, but you are welcome to come along to a meeting free of charge before joining.

For further details, please contact Barbara on 01526 861566, Moira on 01526 860122, go to our website at www.skwi.weebly.com, or find us on Facebook.

LADIES KEEP FIT

Every Monday afternoon in The Coronation Hall from 2 - 3 p.m. ladies keep fit classes take place. Why not come along? All ages welcome. Cost only £3.50 per session.

HONEYBEES HAVE HIVES, WASPS AND HORNETS HAVE NESTS, BUT WHAT DO BUMBLEBEES HAVE?

Bumblebees live in colonies, with a queen, in small cavities--sometimes underground, but sometimes in small nooks and crannies at or near ground level, never more than a foot or two above ground. They make small, simple wax pots in which they store pollen, honey, and larvae, but they don't make combs. Their life cycle is the same as yellow jackets, paper wasps, and such. In the winter, queens hibernate, and come out in the spring to start new nests. Over the course of the summer, the colony grows and an average maximum bumblebee colony size is usually less than 100 workers. In the autumn they produce new queens and males that mate with them. The males and workers die, and the queens hibernate until the following spring.

Pilgrim

VETERINARY SURGERY

Fydeall Street, Boston
Lincs. PE21 8LE

Our aim is to provide the best possible care for your pets provided by a team of people who really care.

We operate a 24 Hr service.

Your pets will always come first at Pilgrim Vets

RECEPTION OPEN:

Monday - Friday 8.30am - 12.50 pm
2.00pm - 7.00pm

Saturday 8.30am - 1.00pm

CONSULTATIONS BY APPOINTMENT ONLY

Tel: 01205 366872

WINDOWORX

Essential to all Windows & Doors

- UPVC Repairs
- Sealed Units
- Cloudy Windows
- Door Locks
- Misty Windows
- Window Locks
- Draughty Windows
- Handles
- Patio Doors
- Seals
- Doors
- Broken Hinges

Call Graham now on:
01522 831854 or 07974 310128



Tyres supplied and fitted
Tracking for cars, vans & lorries

Heckington Business Park, Station Road, Heckington, Sleaford, Lincs, NG34 9JH

Tel: 01529 460800

Email: service@samsheckington.co.uk

Visit: www.samsheckington.co.uk

Animal Magic Pet Shop



9-10 Riverside Shopping Centre,
Sleaford, Lincolnshire NG34 7PD

Tel: 01529 307539

- * Large range of wild bird foods
- * Everything for your pets needs
- * Fish, small animals, birds etc
- * Reptiles - all accessories now in stock
- * Free delivery on bulk and large items



STEVE COY

24 High Street,
South Kyme,
Lincoln LN4 4AD

Tel: 01526 860952
Mobile: 07867 972700
Email: cohills@ymail.com

VILLAGE TIDY GROUP

We are a friendly bunch dedicated to the upkeep of the village, and new recruits are always welcome. Why not come and join us in 2015. We meet on the last Saturday of the month outside the Coronation Hall at 8.30am. The next scheduled session will be in March.

FREE BOOK EXCHANGE

Please come along and exchange your books free of charge. The Coronation Hall is open weekly for book exchanges on Tuesday 7.30 - 8.30 p.m., Wednesday 7.30 - 10.00 p.m.



COMMUNITY POLICING



Contact details for your Neighbourhood Policing Team at the Sleaford Police Station, The Hoplands, Boston Road, Sleaford, NG34 7LZ are:

PC 569	Derbyshire
PC 400	McLardy
PC 418	Green
PCSO	Kennedy
PCSO	Ironmonger
PCSO	Welby-Everard

To contact any of the above officers, please dial 101 and extension 3858
FOR EMERGENCIES CALL 999, or LINCS POLICE HQ on 01522 532222

BURDENS GROUP
Experts in our field
Lincolnshires
Premier Dealer for

SALES
PARTS & SERVICE

NORTH KYME
T. 01526 860 060 F. 01526 861 347

SUTTERTON
T. 01205 460 466 F. 01205 460 122

WRANGLE
T. 01205 870 011 F. 01205 871 252

Email: adam.bannister@burdens.com
www.burdens.com

Graham W. Calvert (Jnr)
Plumbing and Heating Services

Tel/Fax: **01526 397504**
Mobile Numbers:
Graham 07976 572526
Paula 07909 548273

Wake up to something different every morning!

We deliver newspapers and magazines to North and South Kyme and Billinghay 7 days a week

We can also deliver groceries, beer & wine and lottery tickets

So give us a call

Heckington Newsmart
3 High Street, Heckington 01529 460574
npitman@tiscali.co.uk

PriceMart

HEADLINES UNISEX HAIR SALON
Market Place, Swineshead Tel: 01205 820335

Open Tuesday - Saturday 9.00 am - 4.00pm
Late Night Friday until 6.00 pm
Special rates for Senior Citizens on Tuesday and Thursday

We offer professional, affordable hairdressing in the centre of the village
Whatever your style our qualified staff will be happy to look after all your haircare needs

Free consultations.
Ample free parking

Stockists of Tigi products.
Gift vouchers available

THE PARISH CHURCH OF ST MARY & ALL SAINTS



Vicar: Rev Mike Rose Tel: 01526 861746
Churchwardens Mrs J Morris Tel: 01526 861269
Mr M Cass Tel: 01526 860857

Church Services

<u>Date</u>	<u>Time</u>	<u>Service</u>
1 March	9.30	Holy Communion
15 March	11.00 am	Family Service (Mothering Sunday)
2 April	7.00pm	Tenebrae Service (Maundy Thursday)
19 April	11.00 am	Holy Communion

Letter from the Vicar

The Vicar is going on the radio! Don't worry, I won't be on for long. I've been asked to read out a clue for BBC Radio Lincolnshire's 'Pirate Gold' show, it's a sort of Anneka Rice type treasure hunt. I can also put in a few plugs for the Church too.

We wish Vijay from the Hume Arms all the best as he recovers from his disagreement with the floor, resulting in a lengthy immobilisation and a leg in plaster. He still managed to cook us a steak from the seated position on Steak Night at the Hume. Bravo Vijay! Speaking of meat, I'm giving it up for Lent. 40 days and 40 nights on a Vegetarian diet will be interesting. I hope that whatever it is you're thinking of giving up for Lent, or perhaps taking something up, it will prove to help you focus upon what is important to you.

We have many services around our group of six churches including St Mary's and All Saints, South Kyme. We hope you will be able to join us at one of our services. We are holding the 'Tenebrae Service' in South Kyme again this year. This service which occurs on Maundy Thursday at 7pm will see the cloths and candles removed from the altar and the lights extinguished in the Church. It is also known as the 'Liturgy of the Shadows' and is a solemn and moving service. I hope to see you all there, you are most welcome.

I've had a request to bring back the 'Philosophy for Everyone' courses again. This time it will be around May/June of this year. More information will appear around the village and the Church. If you are interested in getting involved please get in touch on 01526 861746 or email me at mikeredrose63@hotmail.com

May I wish you all a thoughtful and reflective Lent, and, when it comes, a Happy Easter 2015.

With best wishes from your Vicar,
Mike.

The Hume

BAR & RESTAURANT

*Our Family run pub offers fantastic pub
fayre and authentic Indian dishes*

We have two spacious restaurants for relaxed dining. Sundays are special as we carve our roasts at your table from our victorian carving trolley.

Whether you choose to dine in, or order a takeaway, all meals and desserts are carefully prepared and cooked in our own kitchen.

The Hume has a good selection of real ales, all of which are individually and locally sourced. Whether you prefer a good 'honest pint' or a glass of wine in your local pub, you can be sure that Maeve and Vijay will always give you a warm welcome.

The Hume also offers excellent ensuite B&B facilities.

For all bookings and take away orders, call us on 01526 869143

MOTHERS DAY

Why Not Treat Mum to dinner at The Hume Arms on Sunday 15 March. For a full menu please visit the village website and follow the link to The Hume.

ST PATRICK'S DAY

Leprechauns, shamrocks and the luck of the Irish – when people think of St. Patrick's Day, it usually conjures up images of all things green. It's all about finding the pot of gold at the end of the rainbow, so forget the green and embrace the gold and come to The Hume and enjoy our St Patrick's day celebrations. The fun kicks off at 7.30pm on Tuesday 17 March.

HUME COFFEE MORNINGS

The next monthly coffee mornings will be held on Wednesday 11 March and Wednesday 8 April. Please drop in for a chat, we are all very friendly and you will be made most welcome.

BRAIN FACTS

Your brain accounts for only 2 percent of your body weight but consumes roughly 20 percent of your calorie intake. The percentage is even higher in kids, whose brains are still developing. The average newborn's brain uses close to 75 percent of available energy, and an 11-year-old's still burns through a third. For an adult, that translates into something like 20 watts. About 60 to 80 percent of the brain's energy is used for "neural signalling" — thinking, as the common folk call it — with the remainder devoted to repair and replenishment.

This news bulletin is to inform you what we are doing to reduce flood risk in the South Forty Foot Catchment.

What is the South Forty Foot Catchment?

The South Forty Foot Catchment is the geographical area where watercourses flow into the South Forty Foot Drain, also known as the Black Sluice Navigation. The South Forty Foot Drain takes water from the fenland area of South Lincolnshire into the Boston Haven at Black Sluice Pumping Station (see map on right showing the catchment).

We are responsible for operating Black Sluice Pumping Station and maintaining the South Forty Foot Drain and some of its feeder drains. Black Sluice Internal Drainage Board operates on both banks of the South Forty Foot Drain, pumping drainage water into it from its network of ditches.

During normal conditions gravity sluices at Black Sluice Pumping Station discharge the flows from the South Forty Foot Drain when the tide is low. When there are high flows in the South Forty Foot Drain during high tides, the pumping station operates to pump out fluvial flood water into the Boston Haven. The pumping station, built 68 years ago, is now in need of refurbishment.

Black Sluice Pumping Station

On 5 December 2013, the East Coast Tidal Surge flooded the pumping station, causing 3 of the 5 pumps to be damaged. Due to the age and condition of the pumps and the lack of flood risk benefit, the decision was taken not to undertake costly repair of the pumps. As a result the pumping station now has only two operational pumps with half of the original pumping capacity. To repair the pumping station and refurbish it will cost around £15-£20million - which is significantly more money than we have for this project. This has increased the need to explore alternative flood risk management solutions for the catchment.

Although the pumping station is still beneficial for land drainage purposes, there are only 8 homes and 4 non-residential properties in the lowland area which benefit from a reduced risk of flooding by the operation of the pumping station - these have already been contacted separately.

Most of the flood risk within the catchment is in the highland villages - which our modelling shows are not influenced by Black Sluice Pumping Station. As a result, our earlier investigations concluded that maintaining the pumps cannot be justified on flood risk grounds alone.

Options for reducing flood risk

It is likely that a combination of the options below will be needed to reduce the risk of flooding in the South Forty Foot Drain catchment:

Lower Catchment Options	Upper Catchment Options
Black Sluice Pumping Station (at Boston) - turn the pumps off (including decommission works)	Store water upstream of high ground villages (such as Billingborough, Horbling and Swaton)
Black Sluice Pumping Station - Pumps off & Additional Gravity Discharge at Boston	Increased maintenance
Black Sluice Pumping Station - Pumps off & Spillways along the South Forty Foot Drain	Flood relief channel/bypass flood storage
Black Sluice Pumping Station - Pumps off & Property Level Flood Protection within the low fenland part of the catchment	More substantial upstream flood storage (e.g. reservoir)
Black Sluice Pumping Station refurbishment	Alterations to the watercourses flowing into the South Forty Foot Drain
Widening of South Forty Foot Drain	
Transfer of flood risk management assets to Black Sluice Internal Drainage Board to manage as land drainage assets	
New South Forty Foot diversion channel around Boston	
Containment (larger flood storage reservoirs)	

Public consultation events

We would like to know what you think about the options for reducing flood risk in the South Forty Foot Catchment. We are holding two public consultation events - the events will be run as drop-ins meaning you can come along at any time to speak to a member of the project team.

11 March 2015 - Billingborough Village Hall, 12pm - 7pm

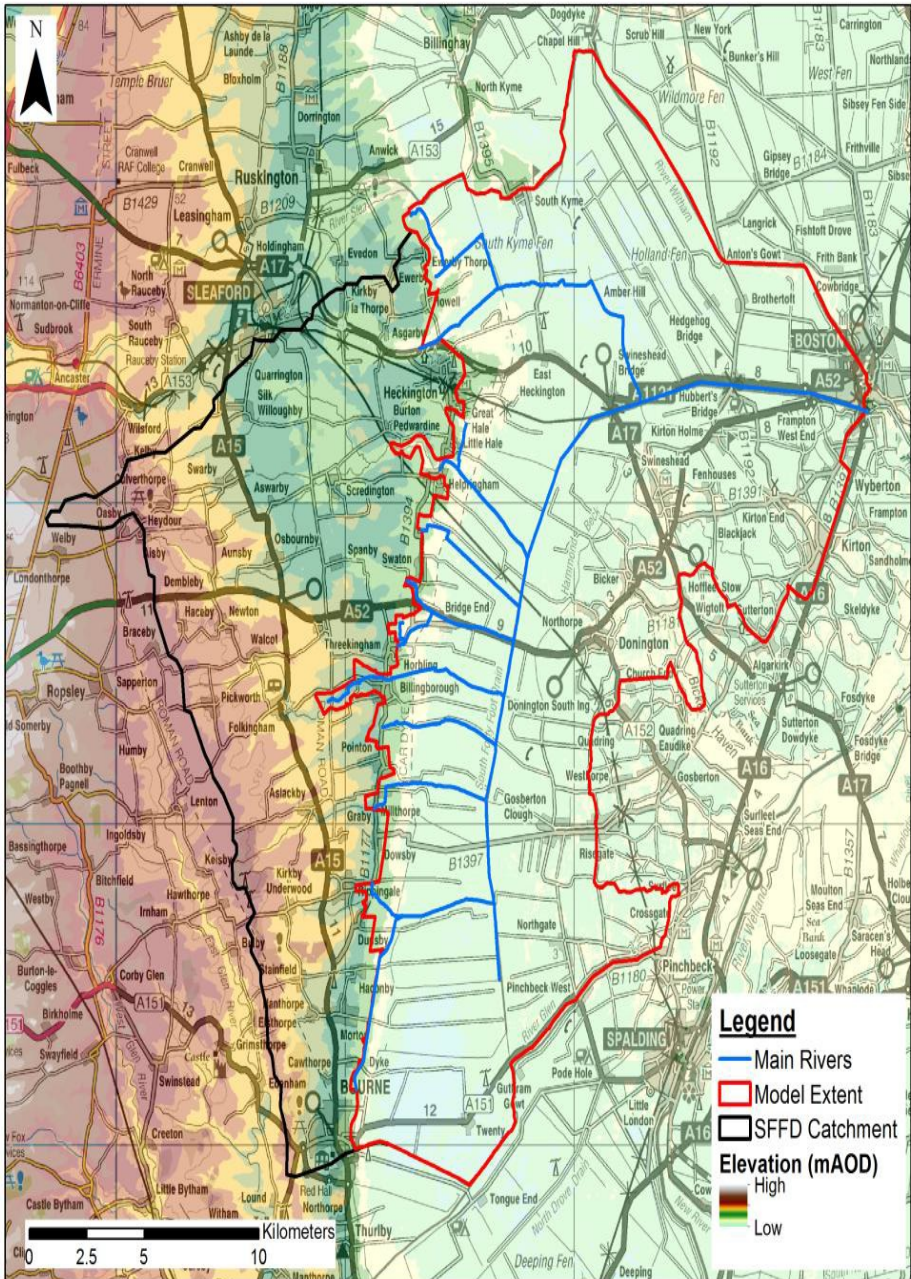
12 March 2015 - Bicker Village Hall, 12pm - 7pm

Any questions?

Contact: Kevin Abbott (Environment Agency Project Team)

Email: kevin.abbott@environment-agency.gov.

THE SOUTH FORTY FOOT CATCHMENT AREA



NOTICES

SCARECROW COMPETITION

The scarecrow competition will be held at The May Day weekend on 2/3 May. This year there will be a theme based on nursery rhyme characters. The parish council has kindly donated prize money and this year there will be three prizes - 1st £50, 2nd £25 and 3rd £10. We look forward to a lot of entries this year. There will be a £2.00 entry fee as usual and entry forms will be available nearer the time from Sue or Elsie.

SOUTH KYME DUCK RACE

The annual duck race will take place on Saturday 2 May at 4.00 pm on the river. Purchasing a duck for entry into the race can be made at The Coronation Hall on Saturday 2 May.

TABLE TOP SALE

Saturday 2 May from 10.00 - 2.00 pm in The Coronation Hall. Tables are £5.00 inside and £4.00 outside the hall. There will be a 20p admission for the public. Refreshments will be available, and there will be a homemade cake stall, a tombola and a raffle. Car parking is at the rear of the hall. For further details and to book your table, contact Josie on 01526 860645



At the time of writing we are now half way through another academic year at school. Looking back at the school's results for last year and after discussion with the Local Authority with regard to the attainment and achievement of our pupils, I am pleased to announce that we were graded as good in all areas and outstanding in some. Through Key Stage 1 (from the beginning of Year 1 to the end of Year 2), pupils make at least good progress, with many making outstanding learning gains. As a result, attainment is high and above national averages. At Key

Stage 2 (Year 6) the percentage of our pupils making expected progress is above the national average in all areas. In the Foundation Stage, the percentage of our pupils making what is termed a 'Good Level of Development' is again significantly above the national average. This has been achieved by the school having 'aspects of outstanding teaching and learning' a quote from external moderation of our school.

Currently we have a number of after school and lunch time school sports clubs operating, ranging from handball to hockey to high 5 netball. Two of our classes are accessing dance provision from NK Dance on a Friday morning this term. Our children have enjoyed representing the school in football, hockey, aqua splash and high 5 netball competitions this term. We look forward to continued success in the remainder of the Spring Term and the lead up to Easter.

The Friends of the School are hosting an Easter Bingo at school on 20 March 2015 with chocolate as prizes. Doors will open at 6.00pm and all are welcome.

With best wishes

Mr R Allen, Head Teacher

SOUTH KYME CORONATION HALL

Forthcoming events

On Friday 20 March we have **Rag Mama Rag**, our second act for 2014/15 from the Lincolnshire Rural & Community Scheme. *Rag Mama Rag* create an exceptionally full and hard driving rhythmic sound with an interesting and wide range of instruments. Ashley Dow on a variety of guitars, ukulele and vocals and Deborah Dow on harmonica, washboard, percussion and backing vocals soon have audience's feet tapping. Their repertoire is 20s and 40s Blues based, but extremely varied, encompassing Mississippi Blues, East Coast Ragtime sounds, early White Country tunes, original compositions and many other regional styles. Touring non-stop *Rag Mama Rag* have played at many major festivals in Europe and beyond. More details and videos at www.rag-mama-rag.com and tickets are £8.00, with family tickets at £20, from Josie Phillips - Tel: 01526 860645.

Then on Saturday 4 April we have **Travis Logan**. Travis has dedicated his life to country music, writing and performing since childhood and culminating in over 3,000 live performances influenced by the likes of Waylon Jennings and Johnny Cash. He has a passion for country music and excels as a singer/songwriter but also as a musician and composer and has won numerous awards. Tickets are £8 from Josie Phillips – Tel: 01526 860645

Volunteers still needed

In the last edition we indicated we were keen to create two volunteer roles - a Technician role who can help us develop our stage lighting and use of IT, and a Marketing & Social media role. Unfortunately no one has shown any interest so far. If anyone is interested in either or both roles please contact Julian Purvis (01526 861868) or via julianpurvis2@gmail.com by 31 March. Minimum age 16 and there is no need to be a resident of South Kyme.

Dance lessons

The Monday morning dance lessons (at 10.30 and 11.30am) and occasional tea dances organised by Terry and Valerie Metcalfe continue to be popular. Beginners and improvers are from 10.30 until 11.30am and the advanced class is at 11.30am until 12.30pm.

Café Kyme

The next Café Kyme's are on Tuesday 3 March and Tuesday 7 April. Homemade soups, bread, cakes and other delicacies await you.

Next meeting

The next Village Hall meeting will be on Mon 18 May at 19.30pm.

Josie Philips
Chairman

H R MUNKS & SONS

Agricultural Contractors

Home Farm
South Kyme
Lincoln
LN4 4AE

Tel: 01526 860650
Mobile: 07889 833750

JOHN WISE & CO



Fabrication and Welding

Specialist Fabrications to customer requirements
Agricultural Engineering
Bearings and spares supplied
Site erection and fitting service
Steel Sections supplied to order
Fastenings and Industrial Supplies stocked

Tel: 01526 860268
Mobile: 0780 112 3070



Please call in for information on Golfing or Social Membership details, or contact us by phone on 01526 861113, by email at info@skgc.co.uk, or visit our website at www.skgc.co.uk.

Social members and guests please call n or check the website for details of our dining and social events

PHOTOCOPYING SERVICE

Available for copies up to A3 size, with reduction/enlarging facilities.

Prices per sheet (standard 80gsm)

Black & white: up to A4 size 6p
up to A3 size 12p

Colour: up to A4 size 35p

Contact Judy at:
52 High Street, South Kyme.
Tel: 01526 861098

SOUTH KYME CORONATION HALL BOOKING RATES

FOR BOOKINGS

TEL: Robin on 01526 861566

HIRE RATES

Main Hall :

Village Resident - £50 all/part day
Non-Resident - £100 all/part day

Small Room :

Village Resident - £25 all/part day
Non-Resident - £50 all/part day

An hourly rate is also available for groups wanting to use the Village Hall regularly, or for anyone just needing an hour or two.

If required, an alcohol licence is available for £20.

A £20 set up fee and £20 clear up fee will be charged if the hall is needed the night before or the morning after an event.

These rates include the use of the kitchen, equipment and crockery.

SOUTH KYME PARISH COUNCIL

After the rush of events at the end of 2014, the start of 2015 has been relatively cool calm and collected. The parish council had an extra meeting during February to tackle the issues concerning the re-instating of a regular bus service to the village and also the issue of dog fouling.

The North Kesteven District Council (NKDC) officer responsible for the implementation of NKDC policy on dog control and dog fouling attended the February meeting to update the parish council on current policy, methods of enforcement and the proposed changes in policy during 2015. As a result of the meeting, the parish council are looking for one or two volunteers to train as part time dog wardens. The dog wardens role would be to educate dog owners of their responsibilities when walking their dogs in the village. The warden will also have the power to have dog owners who repeatedly break the “public space protection act” by not picking up their dog’s poo, issued with a fine. If you are interested in this role, please contact Peter Ayre, clerk to the parish council by email at: payre@tesco.net.

The South Kyme Festival Committee clarified their position in sponsoring through SKPC a weekly shopping bus to Sleaford. It was agreed that a minibus with disabled access would pick up from South Kyme at 10.00am on a Friday and pick up in Sleaford at 2.00pm for the return journey. An official notice giving more detail and a starting date will be advertised in due course. The service will be funded by the Festival for a period of 6 months and a decision on future support will be made at the end of the 6 month run.

Speeding through the village has been highlighted as becoming an issue again. The parish council is very limited on what it can do and we would encourage all members of the public to keep reporting speeding vehicles to the police and keep a record of times and registration numbers so that any pattern of incidents can be highlighted, such as shift change over at local factories and air bases. Contact details for local police are at the back of the newsletter.

The next parish council meeting will be held at the village hall on Thursday 12 March at 7.30pm and members of the public are welcome as always to attend.

Dave Wood.
Chairman.

PARISH COUNCIL ELECTION 7 MAY 2015

Your Parish Council will be dissolved on 07 May and a new Council will come into being on 11 May. This is an opportunity for all interested parties in the village to become involved in local democracy. The Parish Council (despite it's name, is nothing to do with the church or other voluntary organisations) holds 8-12 evening meetings per year and meetings last for about 2 hours.

To stand for election you must:

- Be 18 or over and a UK, EU or commonwealth citizen.
- Be registered to vote in South Kyme.
- Have occupied land or premises in South Kyme for 12 months.
- Have resided in South Kyme or within 3 miles of it for 12 months.
- You do not need any formal qualifications.

You may not stand for election if you:

- Are bankrupt.
- Have served a prison sentence for 3 months or more within 5 years of the election.
- Have been disqualified under any legislation relating to corrupt or illegal practices.
- Are an alien or of unsound mind.

Full details of the nomination and electoral processes are available in a candidates nomination pack available from: Peter Ayre Clerk to South Kyme Parish Council. Tel 01526 861101/email payre@tesco.net, or alternatively at: www.n-kesteven.gov.uk/your-Council/electoral-registration-and-elections

Your nomination must be completed and delivered in person to Council offices

WHAT IS CRUCIFIXION

In a standard Roman crucifixion, the naked victim was scourged with a whip, its multiple lashes often weighted with bone or metal. Scourging alone could be fatal but usually wasn't. The crucificado was then nailed or tied to the crossbeam (not the whole cross) and forced to carry it to the permanently fixed upright. Blood loss from scourging and nailing helped determine survival time; the tied and lightly scourged could survive for days. In any case, victims suffered a long time before falling into prolonged unconsciousness and death. Soldiers typically didn't hasten things along because long and painful was the point. Usually the victim remained on the cross until birds and beasts consumed the body, but to avoid complaints the Romans allowed some crucified Jews to be buried, as evidenced by a crucified, but buried skeleton discovered near Jerusalem.

USEFUL TELEPHONE NUMBERS

EMERGENCIES

ELECTRICITY	Tel: 0800 375675
LINCOLNSHIRE POLICE HQ	Tel: 01522 532222
FLOODLINE	Tel: 0845 9881188
WATER	Tel: 0845 7145145
ENVIRONMENT AGENCY	Tel: 0800 807060
NHS DIRECT	Tel: 0845 4647

HELP

CITIZENS ADVICE	Tel: 0870 1224422
PARENTLINE	Tel: 0808 800 2222
RELATE	Tel: 01476 592921
SAMARITANS	Tel: 0845 7909090
CRIME STOPPERS	Tel: 0800 555111

DOCTORS SURGERIES & HOSPITALS

BILLINGHAY MEDICAL PRACTICE	Tel: 0844 4120050
SWINESHEAD MEDICAL GROUP	Tel: 01205 820204
HECKINGTON MEDICALCENTRE	Tel: 01529 460213
BOSTON PILGRIM HOSPITAL	Tel: 01205 364801
LINCOLN COUNTY HOSPITAL	Tel: 01522 512512

EDUCATION

BILLINGHAY PRIMARY	Tel: 01526 860786
St GEORGE'S ACADEMY, SLEAFORD	Tel: 01529 302487
BOSTON COLLEGE	Tel: 01205 365701

TRANSPORT

BRYLAINE TRAVEL	TEL: 01205 364087
CALL CONNECT	TEL: 0845 234334
MAINLINE TRAIN STATIONS AT SLEAFORD, BOSTON AND LINCOLN.	
LOCAL SERVICES FROM HECKINGTON, METHERINGHAM & SWINESHEAD BRIDGE. FOR TIMETABLES	TEL: 0845 484950

COUNCILS

NORTH KESTEVEN DISTRICT COUNCIL	TEL: 01529 414155
DISTRICT COUNCILLOR, DAVID DICKINSON	TEL: 01529 307433
LICOLNSHIRE COUNTY COUNCIL	TEL: 01522 552222
COUNTY COUNCILLOR, BARRY YOUNG	TEL: 01529 460205
PARISH COUNCIL	TEL: 01526 861098

MEMBER OF PARLIAMENT

STEPHEN PHILLIPS MP	TEL: 01529 419000
	email: stephen.phillips.mp@parliament.uk

SOUTH KYME VILLAGE WEBSITE

PETER BETTIS	http://www.south-kyme.co.uk
--------------	---

DOG WARDEN

NADINA	TEL: 01529 308150
--------	-------------------